

INSULATION RESISTANCE TESTER FOR DC CURRENT CIRCUIT OF PV SYSTEMS MSEI-200C



Comply with Max. 1000V PV Generation Systems

Increased the applicable circuit voltage up to 1000V from 600V of previous model

Can measure accurate insulation resistance even during generation

Utilizing the generated voltage on solar battery panel for insulation resistance measurement (Patent). No loading to modules and circuits due to no voltage application.

With function to discriminate insulation deteriorated part

Can distinguish deteriorated part by inputting module numbers, in case of measured values less than 1MΩ and can find deteriorated part immediately.

No need to remove surge absorber, etc.

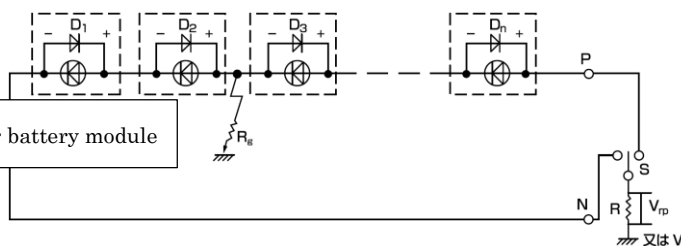
Can measure insulation resistance without removing surge absorber, etc.
Can make operation works efficiently and prevent forgetting relocations.

In case of ungrounded circuit, no need to cut off the power conditioners

Can make measurement without cutting off the solar battery panels and power conditioner in case of ungrounded circuit.

Measuring Function	Generated Voltage, Insulation Resistance (between P phase/N phase/PN phase/Module)
Measuring Range	Voltage : DC0.01 ~ 999.9V Resistance : 0.01 ~ 19.99MΩ
Accuracy	Voltage : ±1%rdg±10dgt Resistance : 0.01 ~ 10MΩ ±5%rdg : 10.01 ~ 19.99MΩ ±10%rdg
Judgement Method	When insulation resistance becomes less than 1MΩ, Red LED lamp will lighten and in case of no problem for resistance value, Green LED lamp will lighten.
Measuring Interval	30/180/300/600/900sec
Module Numbers	Selecting 2 ~ 19
Auto Power-off	Approx.40 minutes after the final key operation
Circuit Voltage	DC1000V PV Generation Circuit
Operation Temp.	-10°C ~ +60°C <85%RH without condensation
Power Supply	AA alkaline battery LR-6 x 4 or AC adaptor (option)
Dimension/Weight	W190×H140×D42mm approx.600g
Accessories	Voltage input cable ×1set, Carrying case ×1 AA alkaline battery ×4, Instruction manual ×1

■ In case of insulation failure on module side



Patent pending

Now newly developing ! INSULATION RESISTANCE MONITOR for DC circuit of PV generation systems

Monitoring Item	Insulation Resistance (between P phase/N phase/PN phase & modules)
No. of Channel	1 circuit
Alarm Setting	0.1MΩ/0.2 MΩ/0.4 MΩ/1.0MΩ
Detection Accuracy	±10% of setting values
Detection Time	600sec (measurement will be stopped during night)
Alarm Signal Output	Open collector
Alarm Lamp	LED display (between P phase/N phase & modules)
Display Part	LCD
Display Range	0.01MΩ ~ 10MΩ
Operation Temp.	-10°C ~ +60°C >85%RH (w/o condensation)
Power Supply	AC100 ~ 200V (50/60Hz)
Dimension/Weight	W130×H200×D38mm approx.600g
Accessory	Instruction manual ×1

MULTI MEASURING INSTRUMENTS CO., LTD.

Akihabara Murai Bldg. 7F., 1-26 Kanda Sakumacho, Chiyoda-ku, Tokyo 101-0025, Japan

TEL: 81-3-3251-7013 FAX: 81-3-3253-4278 E-mail: multi@multimic.com