

MULTI**MULTI MEASURING INSTRUMENTS CO., LTD.**

Akihabara Murai Bldg. 7F, 1-26 Kanda Sakumacho, Chiyoda-ku, Tokyo 101-0025, Japan

TEL: 81-3-3251-7016 FAX: 81-3-3253-4278 E-mail: multi@multimic.comHome Page: <http://www.multimic.com/>

MULTI CIRCUIT LEAKAGE CURRENT MONITOR

Model MCM-8000

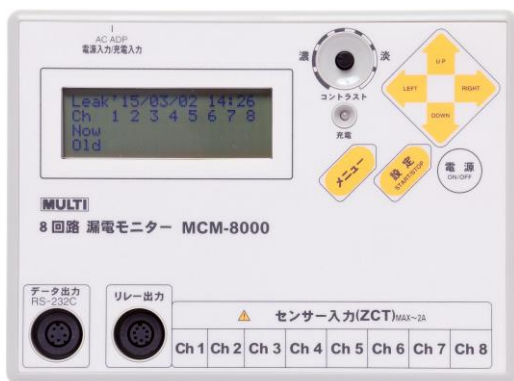
Measuring・display of leakage current values of multi circuit (max. 8 lines) successively for a long term as well as memorizing the average leakage current values between the intervals and the generated & terminated year, date, time and max. current values with outputting signals, in case of exceeding the limit of value set in advance.

MEASURE・MEMORIZE・DISPLAY THE LEAKAGE CURRENT OF MAX.8 CIRCUITS AT THE SAME TIME

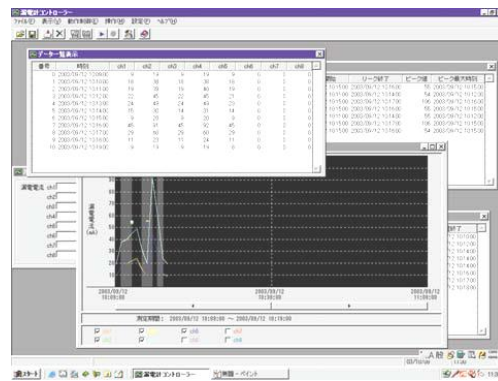
EASY FOR DATA MANAGEMENT (STORAGE BY CSV FORMULA)

COST PERFORMANCE・HI-SPEED SAMPLING W/HI FREQUENCY CUT FUNCTION

INSTRUMENT BODY



PICTURE OF SOFTWARE



STANDARD ACCESSORIES

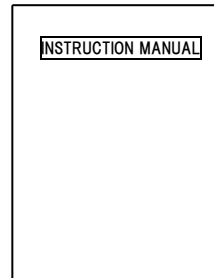
AC ADAPTER



RS-232C CABLE



INSTRUCTION MANUAL



SOFTWARE



CARRYING CASE



GENERAL

1. MEASURING FUNCTION

By Connecting Optional CT Sensors, the instrument can measure and memorize leakage current of 8 circuits at the same time and the memorized data can be seen even during measurement.

2. LOGGING MEASURING FUNCTION

This instrument displays and memorizes the average leakage current between the selected intervals.

Interval : 1 / 5 / 10 / 15 / 30 / 60 minutes

Contents of Memory : Measuring Time / Measuring Circuit / The average current value

Capacity of Memory : Approx. 28 days with 10 m. interval

3. PEAK VALUE MEASURING FUNCTION

In case of exceeding the setting value, the instrument displays and memorizes year, month, date, time of the leakage generation & termination as well as the peak values by each circuit. High speed sampling, comply with ELB.

Range of Setting Current : 10 ~ 1000mA

Contents of Memory : Circuit No. of generation, setting current value and times of generation.
Year / Month / Date / Time of exceeding the setting value and recovery.

Capacity of Memory : generation·recovery Year / Month / Date / Time·Peak Value
2,040 times

4. ELECTRICITY FAILURE COUNTING FUNCTION

In case of electricity failure, the instrument memorizes Year / Month / Date / Time of failure and recovery.

Capacity of Memory : Failure and recovery Year / Month / Date / Time 4,000 times

5. ALARM SIGNAL OUTPUT FUNCTION

In case of exceeding the setting current value, output the signal of non-voltage contact.

6. TRANSMISSION SOFTWARE

The memorized data can be transmitted to PC by RS-232C.

Complying Software : Windows 95 / 98 / 2000 / ME / XP

Output Data : Logging Measured Data / Peak Values / Electricity Failure Data

SPECIFICATIONS

Number of Measuring Circuit	: 8 circuits (channels)
Detection Method	: Clamp-on CT method
Measuring Range	: 0~2000mA
Minimum Resolution	: 1mA
Measuring Accuracy	: $\pm 3\% \text{rdg} \pm 2 \text{dgt}$ (by standard CTs)
Sampling	: Approx. 20mS
Filter Function	: Internally equipped filter for cutting high frequency (Secondary low pass filter : 130 Hz)
Range of Setting Values	: 10~1000mA (Initial setting : 50mA)
Recovery Range	: 10~90% of the setting values
Measuring Temperature	: 0~50°C, less than 80%RH w/o condensing
Storage Temperature	: -10~60°C, less than 80%RH w/o condensing
Measuring Circuit Voltage	: less than AC500V (insulated conductor)
Insulation Resistance	: more than 100M Ω by DC500V insulation tester (between input terminal and housing case) more than 50M Ω by DC500V insulation tester (between power supply source and housing case)
Withstanding Voltage	: AC1500V (50 / 60Hz) one minute between power supply source and housing case
Power Supply	: AC100V~240V with adapter Internal Ni-hydrate Battery
Current Consumption	: Approx. 40mA
Battery Life	: Approx. 4 days at continuous use by full charge
Dimensions & Weight	: 190(W) x 140(H) x 42(D)mm, approx. 700gs

CLAMP CT SENSORS FOR LEAKAGE CURRENT MONITOR (OPTION)

ZCT-18SCM



Inside Diameter : 18mm
45x98x32mm, 65gs

ZCT-30SCM



Inside Diameter : 30mm
59x117x32mm, 95gs

ZCT-40SCM



Inside Diameter : 40mm
64x122x23mm, 125gs

ZCT-80SCM



Inside Dimension : 80x74mm
138x225x37mm, 500gs

ZCT-1100SCM



Inside Dimension:128x108mm
194x342x52mm, 1800gs

Carrying Case for CTs



ZCT-18/30/40SCM=8pcs.,
ZCT-80SCM=4pcs. per case