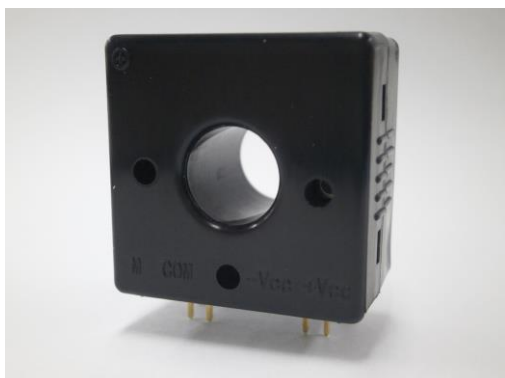


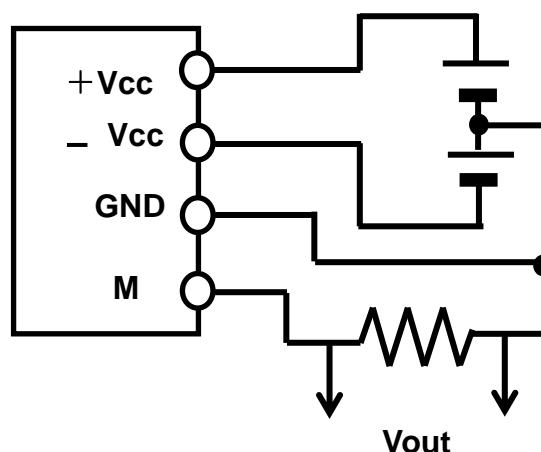
PCB MOUNT TYPE

AC/DC CURRENT SENSOR

Model FDAZCT-11L-0.4



Connection Diagram

**FEATURES**

- * DC/AC Earth Leakage Current Measurement
- * Bipolar $\pm 15\text{V}$ Power Supply
- * Output $\pm 5\text{V}$ at Primary Nominal Current
- * Isolated Housing Case based on UL94V-0
- * Applicable Frequency DC – 18KHz

SUPECIFICATIONS

Model	FDAZCT-11L-0.4
Rated Primary Current (I _{pn})	400mA
Measuring Range	0~ $\pm 800\text{mA}$
Output Voltage	$\pm 5\text{V}/400\text{mA}$
Accuracy	Less than $\pm 1\%$ of I _{pn} (excluding DC current offset)
Output Linearity	Less than $\pm 0.5\%$ of I _{pn}
Power Supply Voltage	DC $\pm 15\text{V} \pm 5\%$ (bipolar)
Current Consumption	Approx. 30mA
Output Response	60m.sec. (90% of Rated Primary Current)
Temperature Coefficient	$\pm 0.05\%/K$
Applicable Circuit Voltage	Less than AC/DC 500V (insulated coating wire)
Withstanding Voltage	AC2500V/1 minute (between through hole and output)
Ambient Operating Temperature	-20°C~85°C (<85%RH, w/o condensation)
Ambient Storage Temperature	-25°C~85°C (<85%RH, w/o condensation)
Material of Outer Case	PA (based on UL94V-0)
Color of Outer Case	Black
Dimension	30.0(W) x 30.0(H) x 19.2(D) mm, Inside Diameter $\phi 11\text{mm}$ As per drawing No. A3-14058
Weight	Approx. 25g
Environmental Standard	Conforming RoHS Directive
Terminal Pin Layout	+VCC: Power Supply +15V, -VCC: Power Supply -15V COM: Output GND, M: Signal Output